



DIY Honda Ruckus Underseat Storage Basket Instructions

by merrypad.com

Love your Honda Ruckus but wish that open underseat space was enclosed?

I did. I'm a chick and needed a way to carry things like the milk and bacon. And gallons of paint. Not to mention my purse, shopping bags, a cell, a notebook, and a camera. I didn't feel like carrying a backpack with me, so I came up with a solution. I'm notoriously a do-it-yourselfer, but I think everyone can be. And my blog merrypad.com works to inspire people to find solutions themselves.

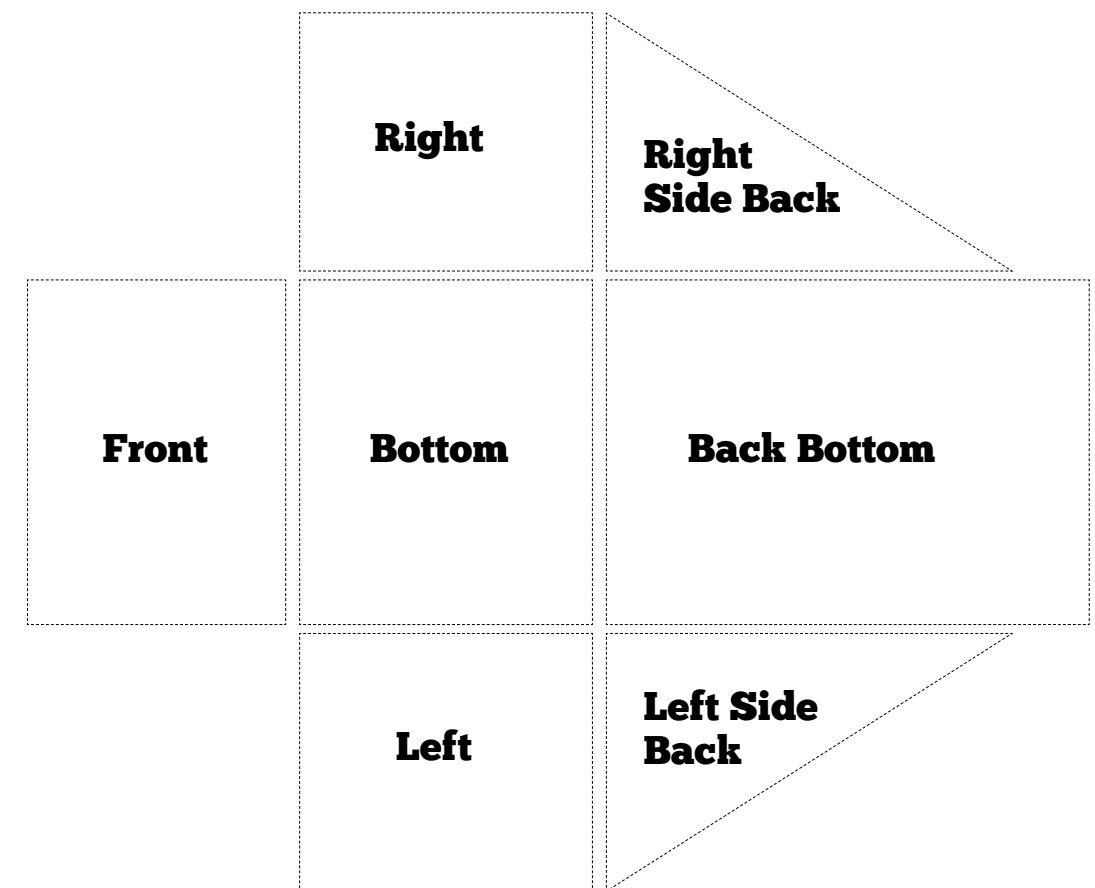
So, before you spend \$75 on a pre-manufactured Ruckus storage piece, try this.

Materials:

- I used a **1 yard piece of heavy mesh** from JoAnn Fabrics. It's called "pet mesh" and more what you'd find sewn onto FiFi's carrying case. I'm not talking about wimpy taffeta mesh.
- **Thin gauge vinyl rope and/or wire** to act as your heavy-duty thread. (FYI - I used both, but one or the other would probably have been strong enough alone considering how it's held up.)
- **Zip ties** (thin enough to poke through whatever mesh you found, and 5-10" long to wrap around the Ruckus frame).
- **Scissors**

Step-by-step:

1. Print this PDF on 11"x17" paper while your boss is at lunch (12x18 if possible). This was designed to be easy, which is why the PDF is formatted as a real-size template. If you print it smaller, you're just going to have to rescale the template onto your mesh (which isn't impossible, but I won't be held responsible for errors).
2. You'll want to cut out each piece of the template on the solid line. Arrange each piece on the mesh so that it all fits, and cut the mesh to the size of each template. Note: That dotted line? It's a generous 1/2" seam, and the line you'll be expected to sew on.
3. Go ahead and sew it together. Do it inside out so you have access to all of the seams, and test out the strength of your stitching by tugging a little as you go. When it's done, flip it so the seams are inside the bag, and test out the fit on your scooter.
4. That top seam around the edge is optional. If you want a nice finished look, fold it in a little and sew it in place like a hem.
5. Looking good? Secure it. I have zip ties around the top on the front and both sides. I left the back open for easy access without having to lift the seat. No, nothing ever flies out.



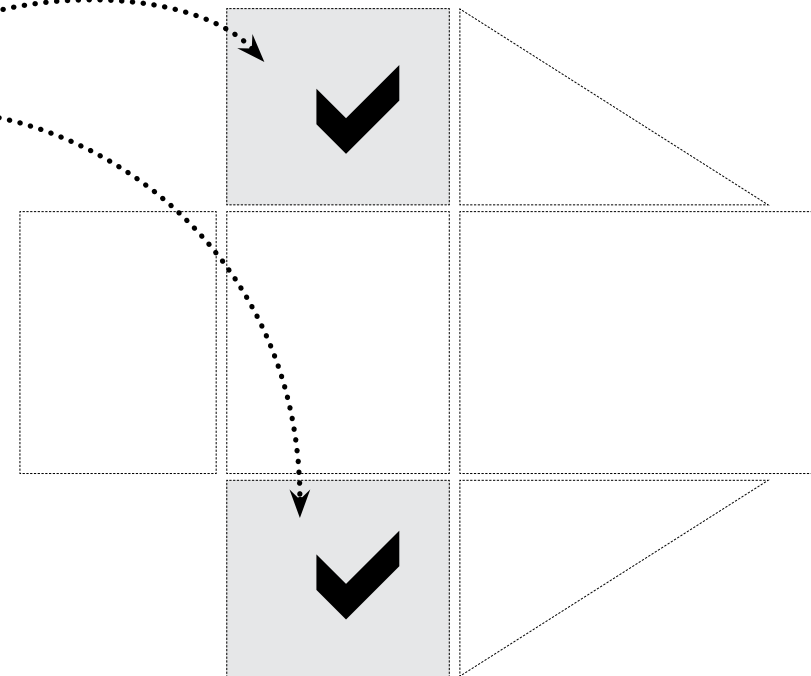
1/2" overhang all around

You'll be sewing along
the dotted line

Cut the pattern
out along this
solid line

**Left Side & Right Side
Panel size: 8.5"W x 7.5"H**

**REMEMBER:
You'll need to
make two of this
shape out of your
mesh!**

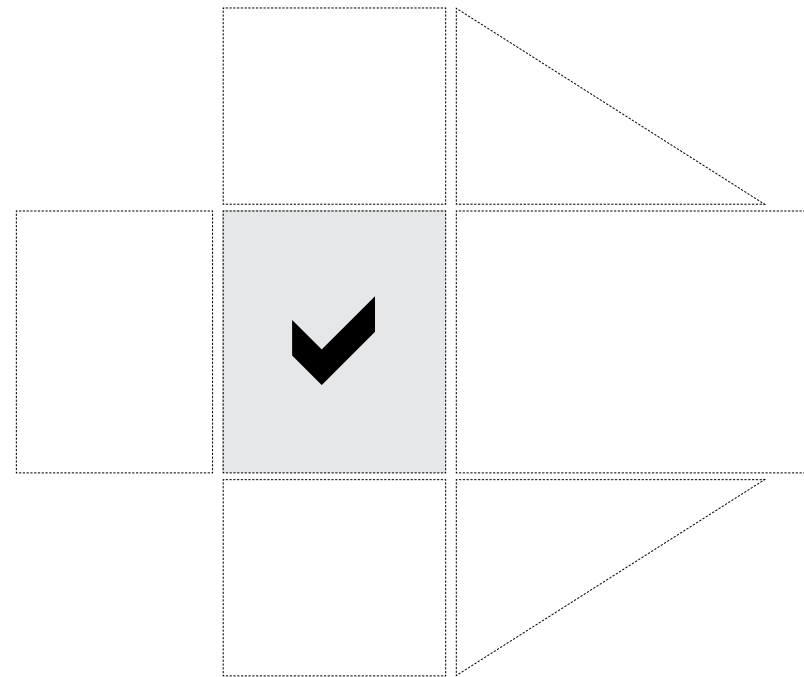


1/2" overhang all around

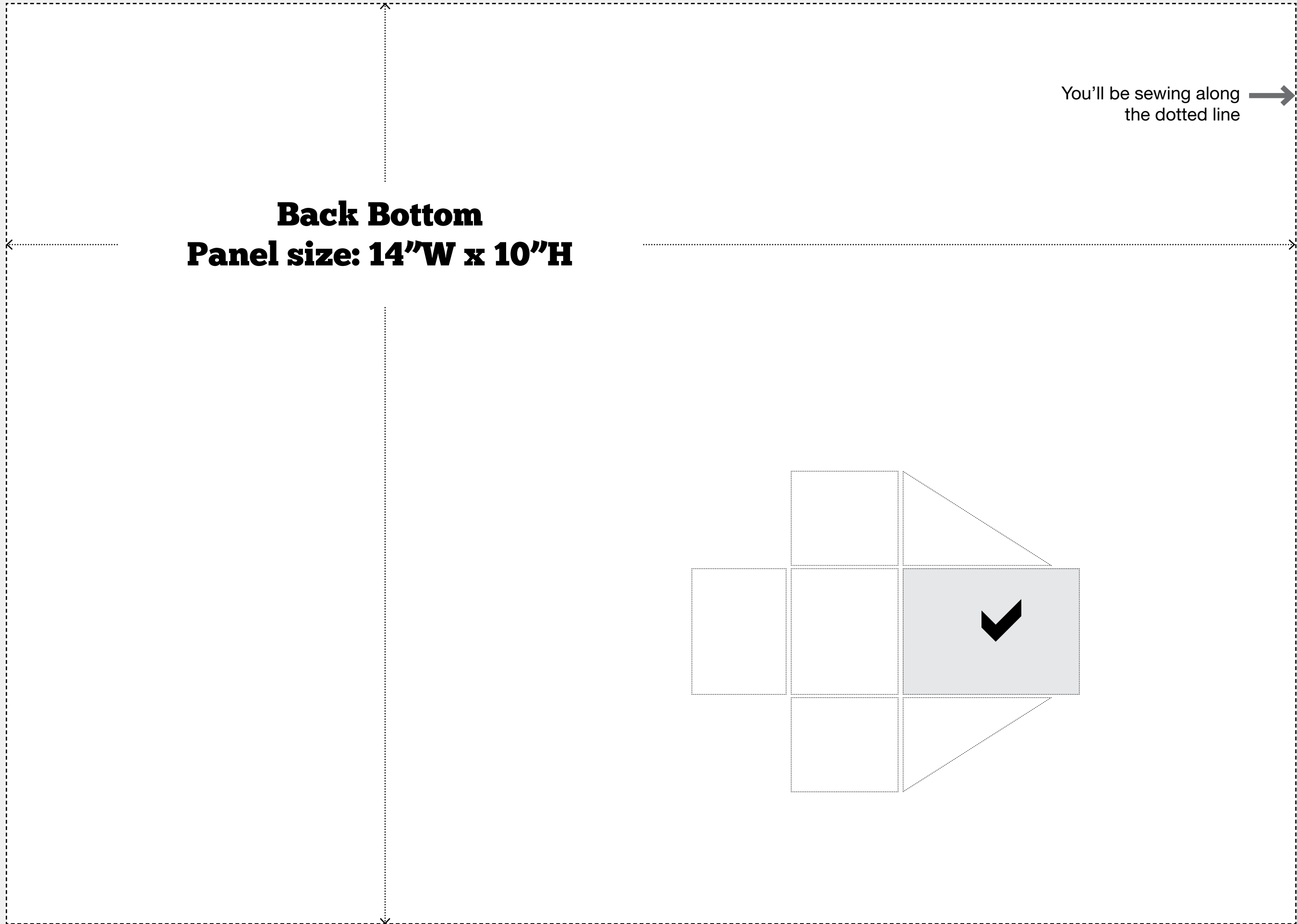
← Cut the pattern out along this solid line

You'll be sewing along the dotted line →

Bottom
Panel size: 10.5"W x 8.5"H



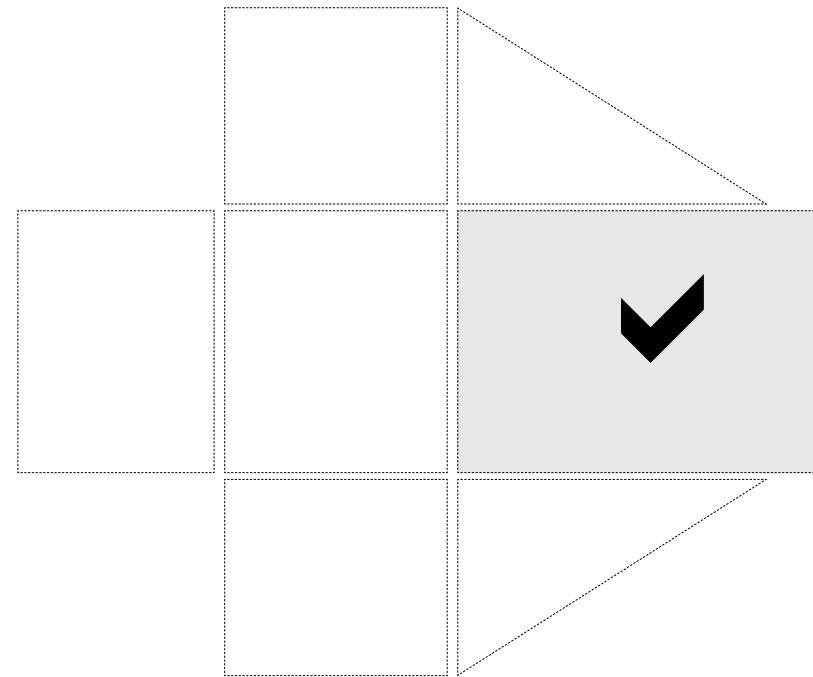
1/2" overhang all around

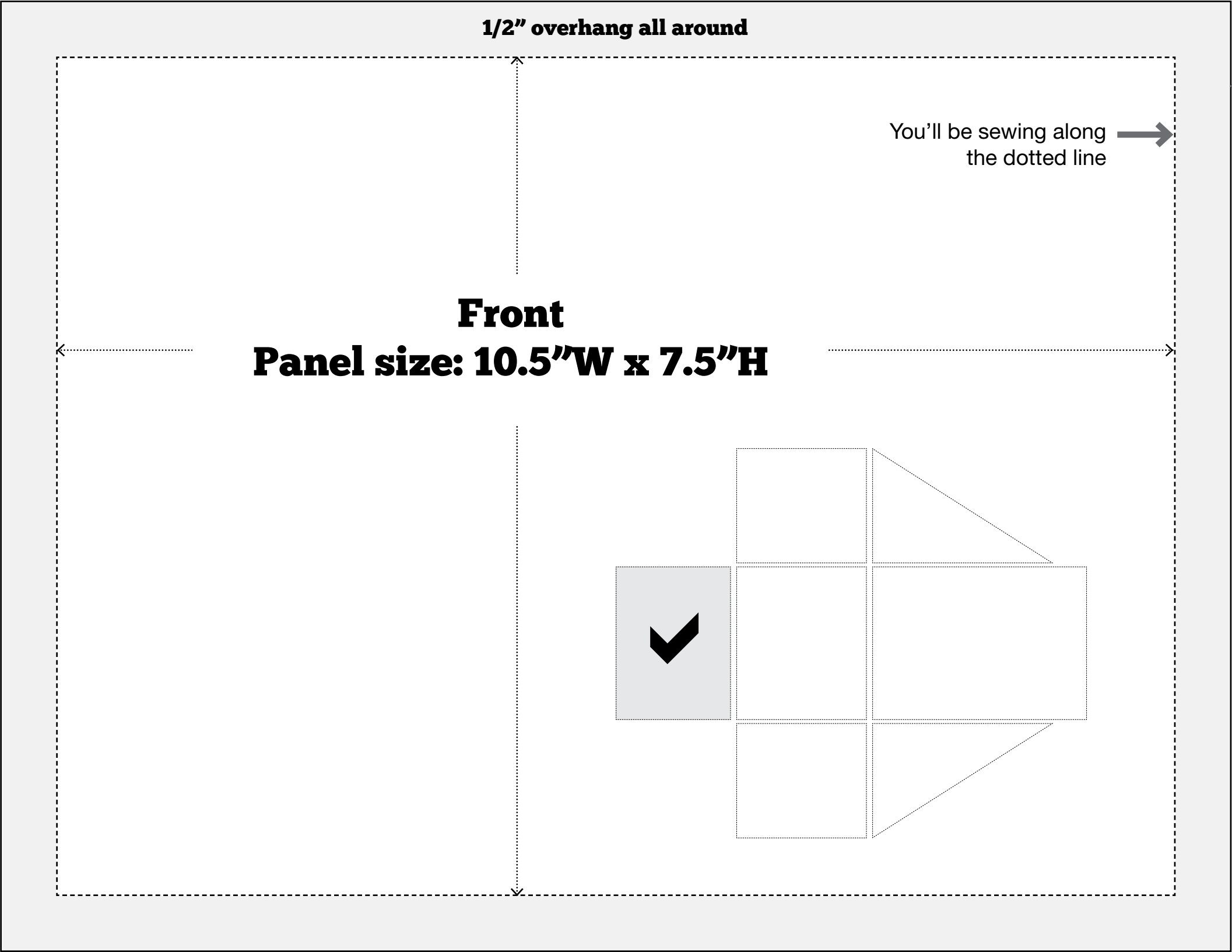


Back Bottom
Panel size: 14"W x 10"H

You'll be sewing along
the dotted line →

← Cut the
pattern out
along this
solid line



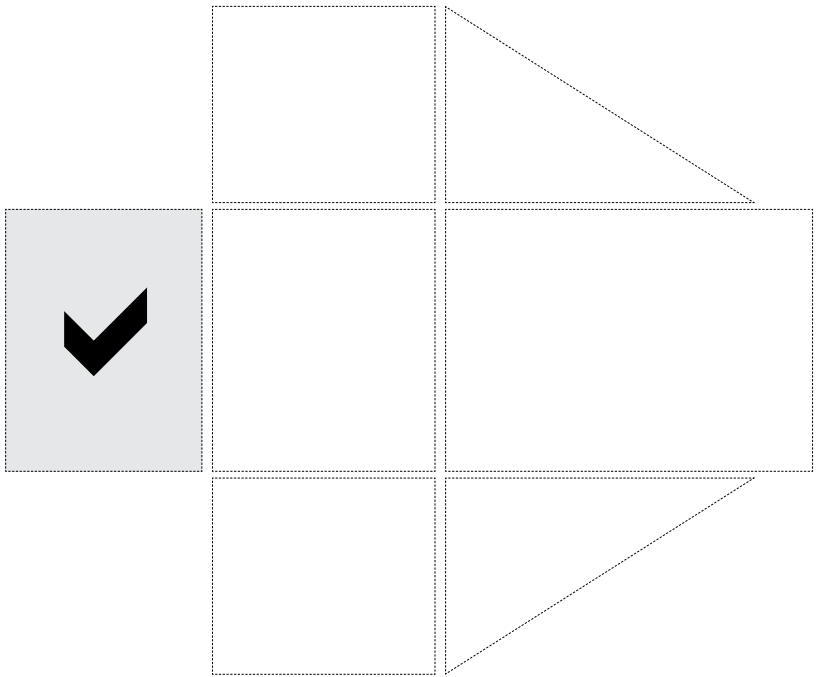


1/2" overhang all around

You'll be sewing along the dotted line →

← Cut the pattern out along this solid line

**Front
Panel size: 10.5"W x 7.5"H**



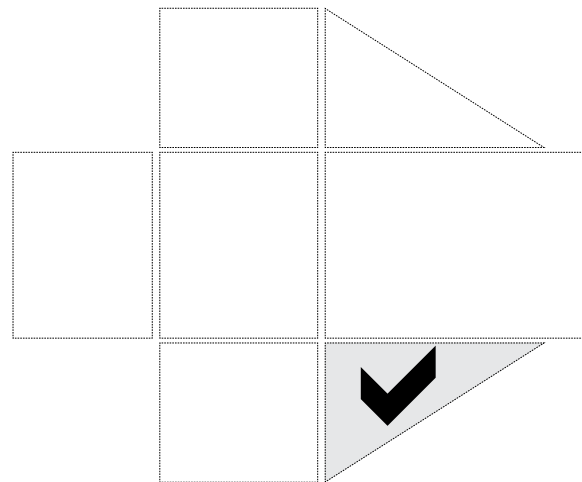
1/2" overhang all around

Cut the pattern out along this solid line

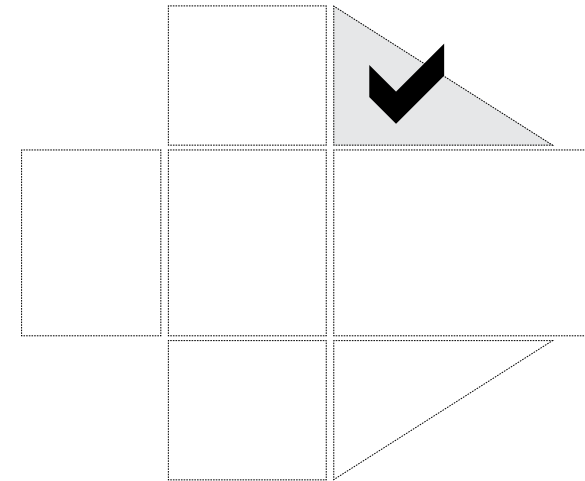
You'll be sewing along the dotted line

Cut the pattern out along this solid line

Right Side Back
Panel size: 11.8"W x 7.5"H x 14"



Left Side Back
Panel size: 11.8"W x 7.5"H x 14"



1/2" overhang all around